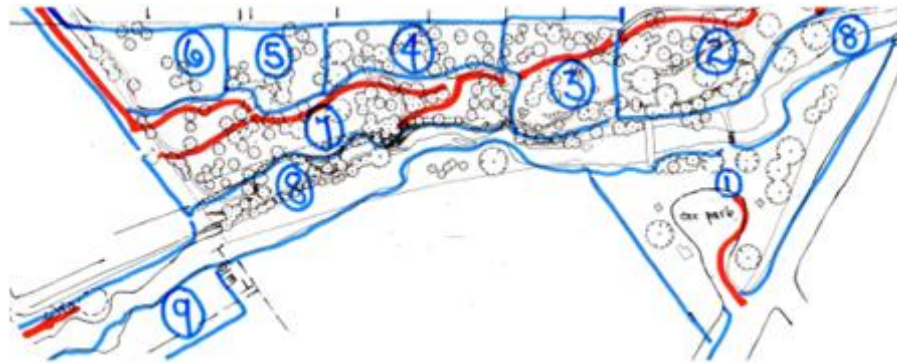




## Greening of Riddell



### Zone 8 – Creek Side (riparian) - from Carre-Riddell bridge to McClusky Street.

The Elms at both east and western end are on the MRSC list for spraying for Elm Leaf Beetle. The Quarry steps were finished mid-year 2002. Sand and rust-proof the Quarry steps. The stepway up the hill south of Somerville Lane—(western steps) was built by Greening of Riddell volunteers in 2008/9 and the handrail was put in by Techweld.

Riddell's Creek is like the majority of streams in Victoria - dynamic alluvial streams characterized by a capacity to alter their own boundaries. All streamside plantings can be washed away in flood, as witnessed recently in 2021.

#### Actions

- Prickly Lettuce came in with red Romsey loam. It pulls out easily - don't walk past them if you have gloves on.
- Collect seed from woolly tea-tree (upstream remnant vegetation) and grow.
- Try another planting of maple *Acer campestre* for bright red autumn colour near bridge.
- Continue to cover/uncover Golden Oak until it is a bit more mature, it is rare in Victoria.
- Consult the CFA and Wurundjeri about using fire for weed management, dead grass reduction and revitalisation of Poa patch near bridge in the MRSC area.
- Bare earth flood plains need to be planted with *Poa labs* or *Lomandra longifolia* and maybe a training fence (revetment) erected to hold the bank and prevent downstream sedimentation in floods.
- Continue to create micro habitats for invertebrates, fish and aquatic reptiles and mammals including platypus. The presence of snags in the stream provides habitat for fish and other aquatic organisms, as the decomposition process forms the basis for the stream food chain. Indigenous riparian plants provide habitat for the terrestrial part of the life cycle of many aquatic species – mayflies, dragonflies, damselflies; frogs need protective river margins; herbs and grasses provide butterfly food. The reed beds are fostering much of this regeneration. Continue to plant to enhance the importance of the creek as a wildlife corridor. A botanist Damien Cook was employed in 2009 to identify creek side plants.



- Remove Broom, Deadly Nightshade, Prickly Lettuce, Ironweed and Patersons Curse seedlings coming from new subdivision.
- Investigate the appearance and management of bulrush in two different places in the creek. Are they Cumbungi, the native plant or introduced *Typha*?

## Zone 8 con't...



The sign at the south west end of the Park was designed and built by Tim Schurmann in 2014.

The swing built by neighbours was fixed by Robin Godfrey in 2018.



We shouldn't underestimate the capacity of the land for self-renewal, self-organisation and emergence. After Greening of Riddell removed the woody weeds on the refugia flats (rabbits and kangaroos feed near the creek where it runs north-south just after Smiths Nursery) bracken flourished close to the creek and *Poas* regenerated across the sandy soil flats. After the willows and woody weeds were removed from Wybejong, aquatic plants, insects, frogs etc came back of their own accord.

### Chain-of-Ponds

Sixty years ago, the creek never dried up.

Now in many summers, the creek dries up to a Chain-of-Ponds.

**Action** - We should help the creek create refugia waterholes concentrating on the two areas that have not dried completely, near the Spillway and Refugia/Kangaroo/Billabong flat. Cliff stabilisation, wildlife corridor plants both sides, exotic weed control of – willow, hawthorn, gorse, ivy, phalaris, Chilean Needlegrass, Patersons curse and Galenia carpet weed.

**Action** - A working relationship was developed with the subdivision contractors at 37-45 Melvins Road, MRSC and Melbourne Water to continue indigenous plantings upstream. More action is needed to prevent a creek side invasion of weed species from extensive bulldozing and introduced soil, to save the precious small herbs and aquatic billabong plants from invasion. Sedimentation of the creek needs continuing management.

In the next few years the Wybejong walking path will continue to be developed upstream past McClusky Street to Smiths Nursery as the creek frontage of 37-45 Melvins Road is added onto the riparian parkland.

Woody weed control has commenced via the Melvins Road developer's contractors and Melbourne Water with assistance and input from Greening of Riddell. We have opened up the weed infested flats next to where the creek does a dog leg north-south. *Photo by Lyn Hovey 2019*

