



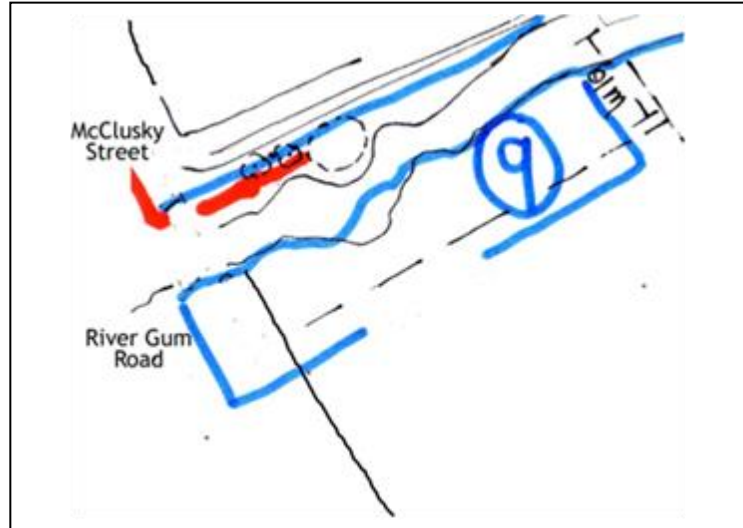
Greening of Riddell

Zone 9

This area south of the creek, was added on to the Park when the Soma subdivision on Kilmore-Gisborne Road went ahead.

61M from the middle of the stream was given to MRSC for a recreation zone. The subdivision plan also shows a road reserve to access land to the east of the reserve.

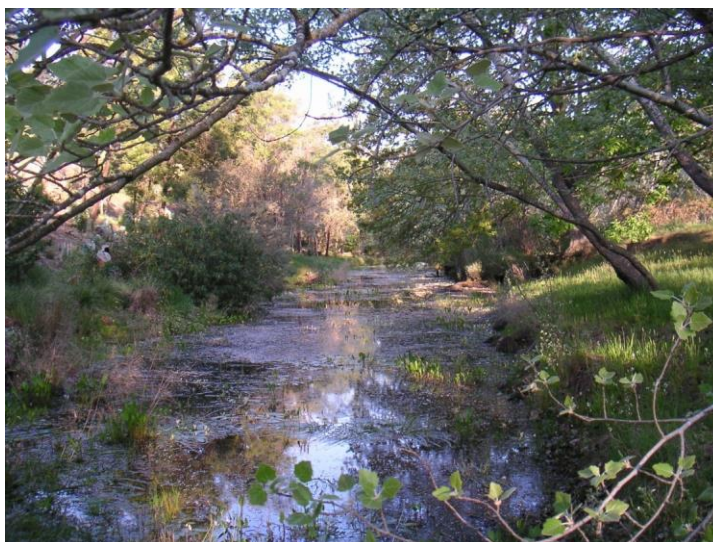
Greening of Riddell were given funds to manage the land for 10 years from 2010.



- Woody weeds—blackberry, gorse, hawthorn, bramble poplar and broom were cut out from creek frontage in 2008
- In 2009 gorse, blackberry, bramble, poplar and broom were sprayed out. Mature elms and oaks are part of the historic walk to Smiths Nursery
- In 2009 the first picnic table was built by Rickie Weaver on the south side of the creek
- In 2017 we planted indigenous riparian zone shrubs

Actions

- Monitor site for weed regrowth. Cut elm suckers and small oaks on a regular basis
- Check Prickly Moses *Acacia verticillata* and Hedge Wattle *Acacia paradoxa* which have been infested with Mealy Bug and been regularly sprayed with Natrasoap in 2018/19
- Dig Angled Onion from River Gum Road gutter drain which we planted with *Lomandra longifolia*
- Build a revetment fence to hold the bank on the oak tree on the eastern fence.



Sunset on the creek frontage at the western end of the Park.